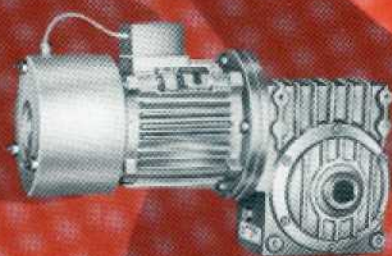
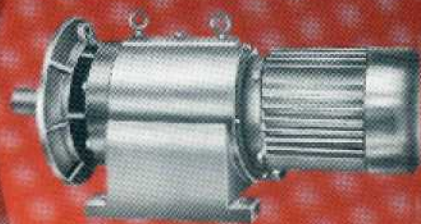
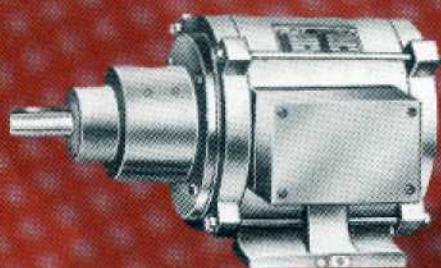
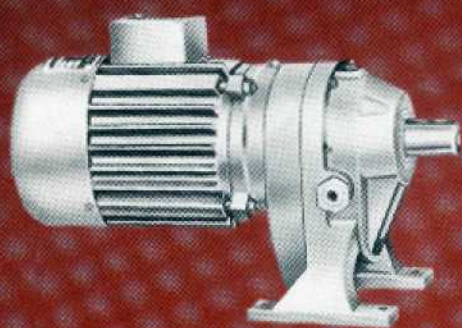


Shakti

GEARED MOTORS



SHAKTI IS POWER

GEARED UNITS

SHREE SHAKTI Geared Motors are designed to provide, a most efficient, economical and compact drive for low speed Applications. It is a most compact combination of an electric motor (A.C. or D.C.) and a gear box (helical, worm or epicyclic) converting the high speed of the prime mover to low speed with maximum efficiency. These units are manufactured under the supervision of trained, technical personnel, with strict quality control, and with latest technical knowhow.

SHREE SHAKTI Geared Motors and Gear Boxes are available in single, Double, Triple and Quadruple reductions. Combination gear units such as Heliworm, Hollow shaft etc., are also manufactured. They are available in foot, foot cum flange, Agitator type of mountings. The opposite page illustrates some of these designs.

The motor body, end covers, gear boxes are manufactured from close grained cast iron. All the gears and pinions are made out of top grade special alloy steels, which are heat treated and lapped for long life and silent running. The ball/roller bearings used are of good quality and are suitable for heavy duty application. The input and output shafts are of high quality steel. For low speeds, the motor shaft has integral pinion and the shaft is made out of special alloy steel.

The Electric Motor is designed for trouble free, economical performance. It seals off the input side of the gear box. Normally it is totally enclosed, fan cooled, continuously rated, Class B insulation operating on 400/440 volts, 3 phase, 50 cycles A.C. supply as per IS:325. Class F or H insulation, IP 55 enclosure etc. can be offered.

The lubrication of bearings, gears, pinions is achieved by splash lubrication which provides ample and positive flow to all of them. Oil leakage is prevented due to the provision of oil seals. No special care is needed except periodic topping up of the lubricating oil to the required level.

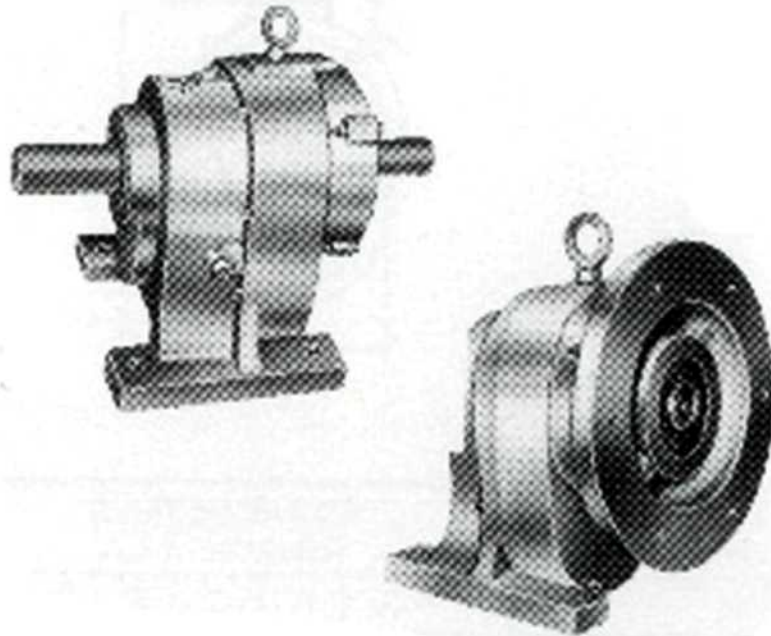
SHREE SHAKTI GEARED MOTORS are warranted for Twelve Months against any manufacturing defects.

A questionnaire is given at the back for you to fill in. This when sent along with your enquiry, will enable us in offering you the most suitable geared motor for your application,

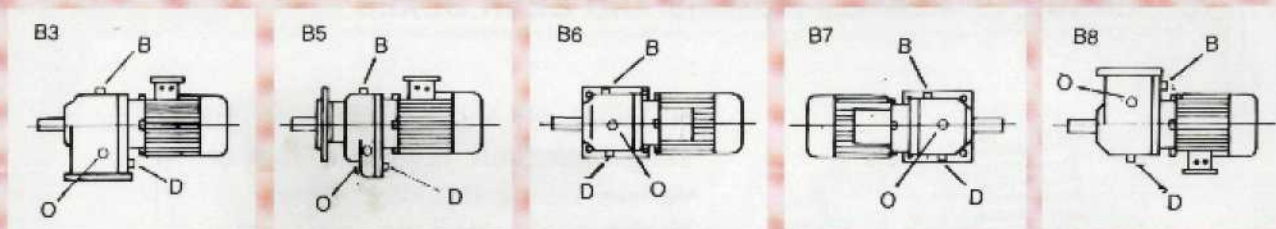
SPECIAL PURPOSE/CUSTOM MADE GEARED MOTORS. We undertake to manufacture Geared Motors as per your specifications if our Standard units do not fit in.

We can offer geared motors fitted with flame proof motors or Dual or Triple speed motors, motors of your choice, DC. motors etc.,

RANGE OF GEARED MOTORS AND GEAR BOXES



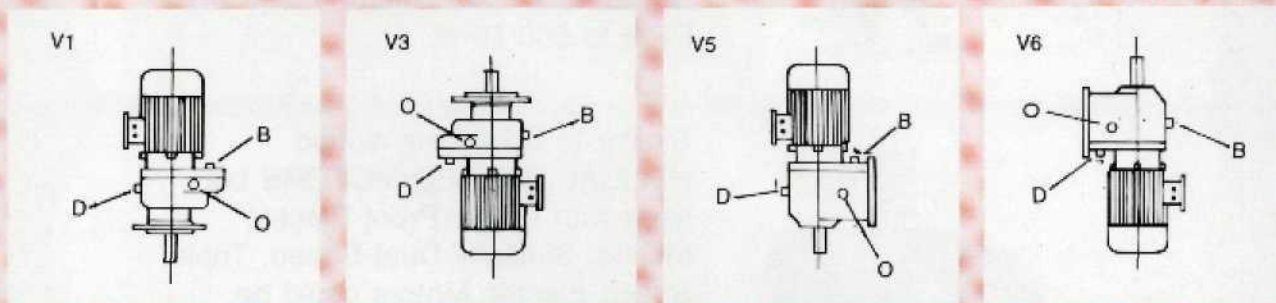
ADOPTA GEAR BOXES are Helical Inline Gear Boxes, designed to mount flange type I.E.C. Standard Electric Motors. Inline Helical Gear Boxes shown here are suitable for coupling to I.E.C. Standard motors. Foot Mounting. For the capacity refer to STANDARD GEARED MOTORS.



D - Drain plug

O - Oil level indicator

B - Breather plug and oil filler



QUESTIONNAIRE

Kindly fill up this questionnaire to enable us in recommending the most suitable
GEARED MOTOR:

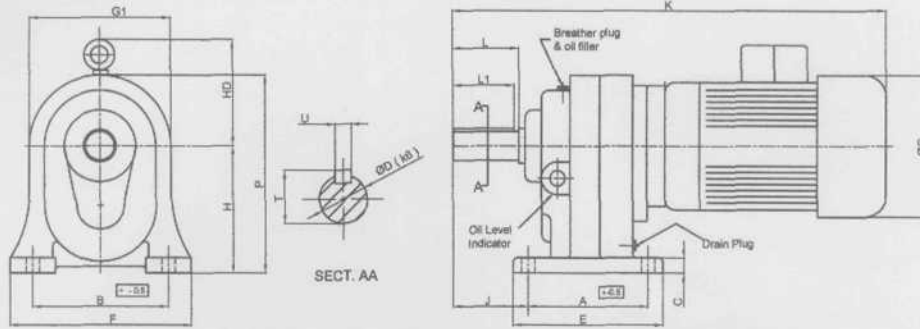
- 1) Power to be transmitted _____ Kw/Hp
- 2) Power supply _____ V _____ Ph. _____ Cfe
- 3) Output RPM required: _____ RPM \pm _____ % (Please indicate the tolerance)
- 4) Variable speed needed No/Yes (Min. speed _____ Max. speed _____)
- 5) Type of mounting:
 - a) Horizontal B3/B5
 - b) Vertical V3/V6/V1/V5
- 6) Output torque needed _____ Kgm.
- 7) Service factor _____
 - a) Duty hrs/day i) 8 Hrs ii) 12 Hrs iii) 24 Hrs
 - b) Type of load i) Uniform ii) Moderate shock iii) Heavy shock iv) High inertia loads.
 - c) Number of starts/stops per Hour/shift
 - d) Reversible (if any) _____ Nos/Hour
- 8) Is the unit required to stop instantly _____ Yes/No (We can provide Electromagnetic brake on the motor, to stop the unit instantly)
Whether brake is to be provided _____ Yes/No,
- 9) Load on the output shaft
 - a) Radial _____ b) Axial _____
- 10) Details about worm gear box, if previously used
 - a) Ht. of centre _____ b) Ratio _____
- 11) Environment:
 - a) Ambient Temp _____ °C
 - b) Corrosive _____ Yes/No
 - c) Explosive _____ Yes/No
- 12) Class of Insulation needed: B / F / H
- 13) Type of enclosure: T.E.F.C. (IP44), Weather proof (IP55)
- 14) Method of starting - DOL / Star Delta / Any other method
- 15) Any other special requirements

Please tick whichever is applicable, we shall appreciate if you will send it typed on your letter head.

SHAKTI ENGINEERS

8-F, MEW EMPIRE INDUSTRIAL ESTATE (A), J.B. NAGAR,
KONDIVITA ROAD, ANDHERI (E), BOMBAY-400 059. TEL.: 8219870 * FAX : 91 -22-8351397
E-mail: shaktiengr@vsnl.com, Website: www.shaktiengrs.com

DIMENSIONS OF FOOT MOUNTED DESIGNED B3



FRAME		Aprov. Wt. in Kg	Overall Dimensions tol. ± 1.0						Shaft Dimensions					Fixing Dimensions Tol. ± 0.5						
			E	F	K	G	G1	P	P1	D (k6)	T	U	L	L1	A	B	S	C	J	H
SG0	63		100	125	340	127			205											
	71				350	140	105	183	210	19	21.5	6	40	30	80	100	10	15	71	100
SG1	63		140	150	360	127			215											
	71				370	140	134	179	222	24	27	8	50	40	115	120	10	12	62	112
SG2	80				385	175			239											
	63				400	127			228											
SG2	71		175	185	410	140	150	200	235	28	31	8	60	50	140	145	12	14	73	125
	80				420	175			252											
SG3	90S				475	182			252											
	80				448	175			232											
SG3	90		195	230	493	182	180	255	298											
	100				507	222			325	38	41.3	10	80	70	160	190	14	18	95	165
SG4	112				530	222			325											
	90				596	182			341											
SG4	100				612	222			371											
	112		270	300	634	222	230	325	371	48	52.3	14	110	100	200	225	22	25	118	210
SG5	132				725	270			395											
	160				735	328			424											
SG5	100				645	222			416											
	112		370	395	667	222	300	405	416	60	64.4	18	140	130	300	320	24	28	140	255
SG6	132				756	270			440											
	160				767	328			459											
SG6	132		370	395	756	270	300	405	440	78	83	22	160	150	300	320	24	28	140	255
	160				767	328			459											

Shakti ENGINEERS
8F, New Empire Ind. Estate (A)
J.B. Nagar Kondivita Lane
Andheri (East) Mumbai-400 059
E-mail : shaktiengr@vsnl.com
Web : www.shaktiengr.com
Tel. : 022-2821 9870
Fax : 022-2835 1397

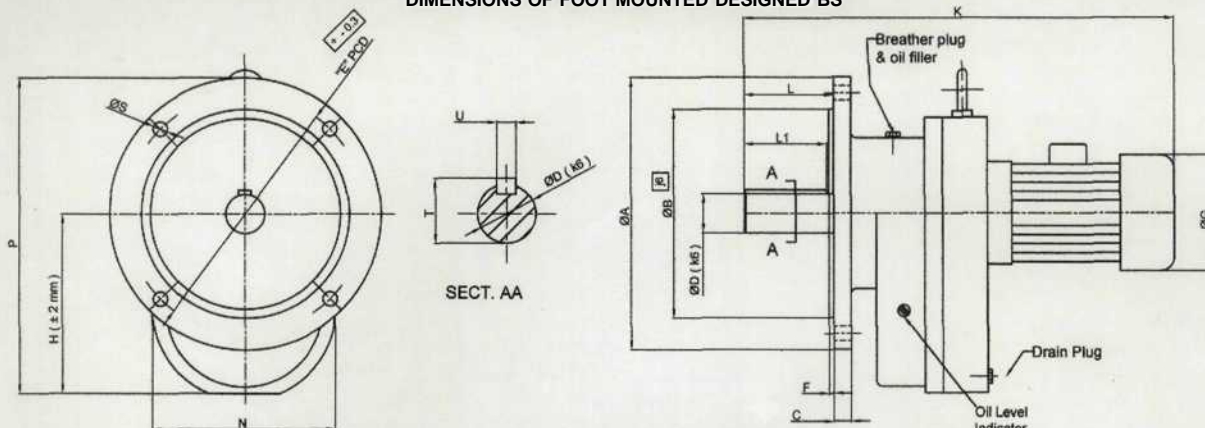
DIMENSIONS OF FOOT MOUNTED
DESIGNED B3

PREPAID BY - PRM
APPROVED BY - GSG

REF, DRG. NO. - 06 / 10 / 066

All Dimensions are in mm. Subject to change without notice as cont. development is going on

DIMENSIONS OF FOOT MOUNTED DESIGNED B5



FRAME		Aprov. Wt. in Kg.	Overall Dimensions tol. \pm 1.0				Shaft Dimensions					Fixing Dimensions Tol. \pm 0.5						
GEAR	MOTOR		G	K	P	N	D (k6)	T	U	L	L1	A	B	F	C	E	S	H
SG0	63		127	330	200	105	19	21.5	6	40	30	130	80	3.5	10	100	10	97
	71		140	340	207													
SG1	63		127	365	208	134	24	27	8	50	40	160	110	3.5	10	130	10	105
	71		140	375	215													
SG2	80		175	394	232	150	28	31	8	60	50	200	130	3.5	12	165	12	120
	63		127	396	223													
	71		140	408	230													
	80		175	425	247													
SG3	90S		182	470	252	180	38	41.3	10	80	70	250	180	4	16	215	14	150
	80		175	488	277													
	90		182	512	281													
	100		222	526	311													
SG4	112		222	548	311	230	48	52.3	14	110	100	300	230	5	20	265	18	205
	90		182	587	336													
	100		222	611	366													
	112		222	633	366													
SG5	132		328	724	390	300	60	64.4	18	140	130	350	250	5	20	300	18	250
	160		370	735	419													
	100		222	659	411													
	112		222	681	411													
SG6	132		270	772	435	300	78	83	22	160	150	350	250	5	20	300	18	250
	160		328	767	464													
	132		270	772	435													
	160		328	767	464													

DIMENSIONS OF FLANGE MOUNTED
DESIGNED B5

PREPAID BY - PRM
APPROVED BY - GSG

REF, DRG. NO. - 06 / 10 / 065

Shakti ENGINEERS
8F, New Empire Ind. Estate (A)
J.B. Nagar Kondivita Lane
Andheri (East) Mumbai-400 059
E-mail : shaktiengr@vsnl.com
Web : www.shaktiengr.com
Tel. : 022-2821 9870
Fax : 022-2835 1397

All Dimensions are in mm. Subject to change without notice as cont. development is going on