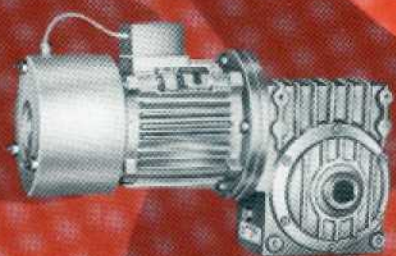
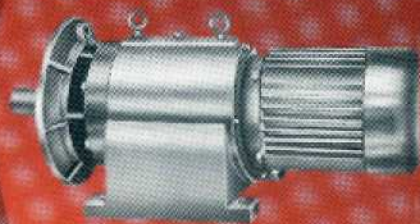
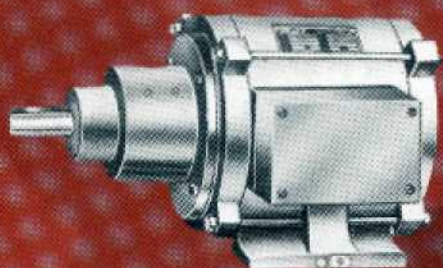
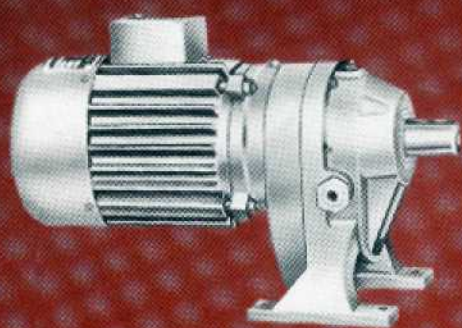


Shakti

GEARED MOTORS



SHAKTI IS POWER

GEARED UNITS

SHREE SHAKTI Geared Motors are designed to provide, a most efficient, economical and compact drive for low speed Applications. It is a most compact combination of an electric motor (A.C. or D.C.) and a gear box (helical, worm or epicyclic) converting the high speed of the prime mover to low speed with maximum efficiency. These units are manufactured under the supervision of trained, technical personnel, with strict quality control, and with latest technical knowhow.

SHREE SHAKTI Geared Motors and Gear Boxes are available in single, Double, Triple and Quadruple reductions. Combination gear units such as Heliworm, Hollow shaft etc., are also manufactured. They are available in foot, foot cum flange, Agitator type of mountings. The opposite page illustrates some of these designs.

The motor body, end covers, gear boxes are manufactured from close grained cast iron. All the gears and pinions are made out of top grade special alloy steels, which are heat treated and lapped for long life and silent running. The ball/roller bearings used are of good quality and are suitable for heavy duty application. The input and output shafts are of high quality steel. For low speeds, the motor shaft has integral pinion and the shaft is made out of special alloy steel.

The Electric Motor is designed for trouble free, economical performance. It seals off the input side of the gear box. Normally it is totally enclosed, fan cooled, continuously rated, Class B insulation operating on 400/440 volts, 3 phase, 50 cycles A.C. supply as per IS:325. Class F or H insulation, IP 55 enclosure etc. can be offered.

The lubrication of bearings, gears, pinions is achieved by splash lubrication which provides ample and positive flow to all of them. Oil leakage is prevented due to the provision of oil seals. No special care is needed except periodic topping up of the lubricating oil to the required level.

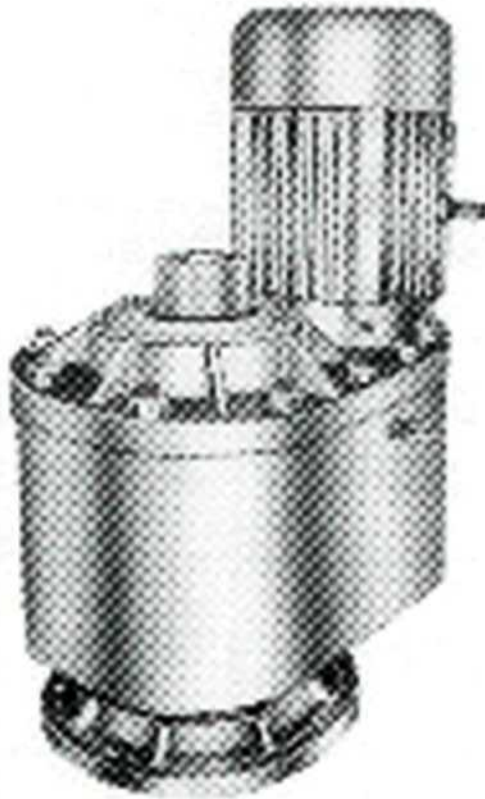
SHREE SHAKTI GEARED MOTORS are warranted for Twelve Months against any manufacturing defects.

A questionnaire is given at the back for you to fill in. This when sent along with your enquiry, will enable us in offering you the most suitable geared motor for your application,

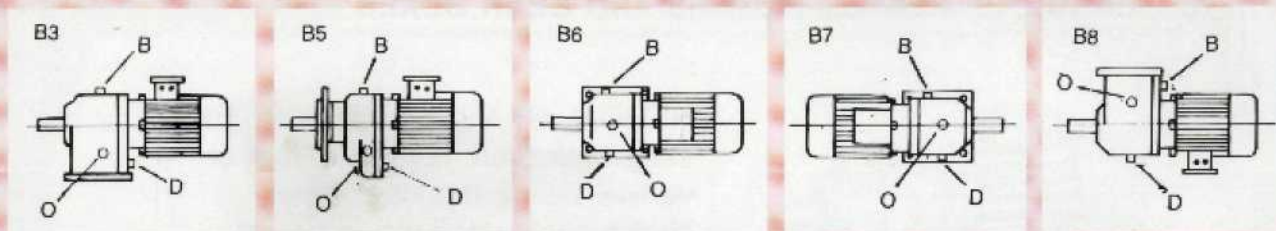
SPECIAL PURPOSE/CUSTOM MADE GEARED MOTORS. We undertake to manufacture Geared Motors as per your specifications if our Standard units do not fit in.

We can offer geared motors fitted with flame proof motors or Dual or Triple speed motors, motors of your choice, DC. motors etc.,

RANGE OF GEARED MOTORS AND GEAR BOXES



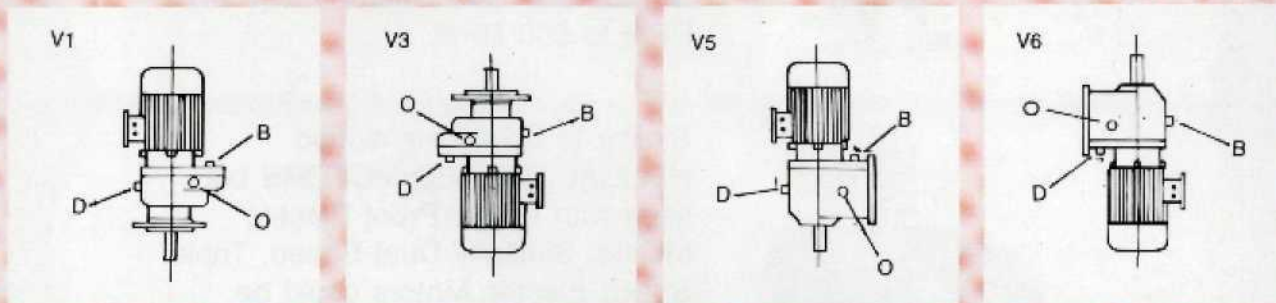
HOLLOW SHAFT HELICAL GEARED MOTORS flange mounting type are most suitable for stirrer duty. The depth of the stirrer can be adjusted freely without disturbing the arrangement.



D - Drain plug

O - Oil level indicator

B - Breather plug and oil filler



QUESTIONNAIRE

Kindly fill up this questionnaire to enable us in recommending the most suitable
GEARED MOTOR:

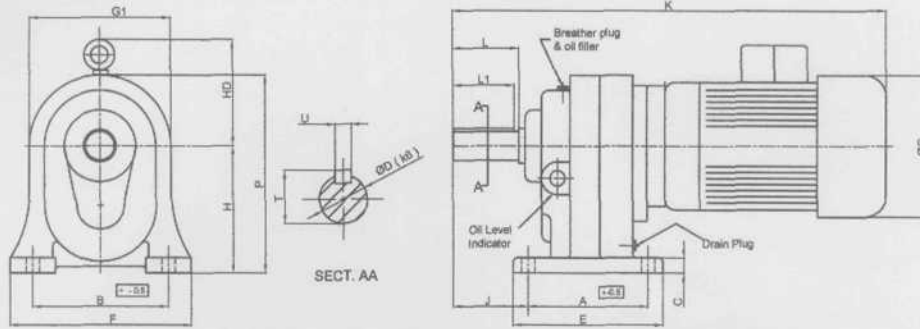
- 1) Power to be transmitted _____ Kw/Hp
- 2) Power supply _____ V _____ Ph. _____ Cfe
- 3) Output RPM required: _____ RPM \pm _____ % (Please indicate the tolerance)
- 4) Variable speed needed No/Yes (Min. speed _____ Max. speed _____)
- 5) Type of mounting:
 - a) Horizontal B3/B5
 - b) Vertical V3/V6/V1/V5
- 6) Output torque needed _____ Kgm.
- 7) Service factor _____
 - a) Duty hrs/day i) 8 Hrs ii) 12 Hrs iii) 24 Hrs
 - b) Type of load i) Uniform ii) Moderate shock iii) Heavy shock iv) High inertia loads.
 - c) Number of starts/stops per Hour/shift
 - d) Reversible (if any) _____ Nos/Hour
- 8) Is the unit required to stop instantly _____ Yes/No (We can provide Electromagnetic brake on the motor, to stop the unit instantly)
Whether brake is to be provided _____ Yes/No,
- 9) Load on the output shaft
 - a) Radial _____ b) Axial _____
- 10) Details about worm gear box, if previously used
 - a) Ht. of centre _____ b) Ratio _____
- 11) Environment:
 - a) Ambient Temp _____ °C
 - b) Corrosive _____ Yes/No
 - c) Explosive _____ Yes/No
- 12) Class of Insulation needed: B / F / H
- 13) Type of enclosure: T.E.F.C. (IP44), Weather proof (IP55)
- 14) Method of starting - DOL / Star Delta / Any other method
- 15) Any other special requirements

Please tick whichever is applicable, we shall appreciate if you will send it typed on your letter head.

SHAKTI ENGINEERS

8-F, MEW EMPIRE INDUSTRIAL ESTATE (A), J.B. NAGAR,
KONDIVITA ROAD, ANDHERI (E), BOMBAY-400 059. TEL.: 8219870 * FAX : 91 -22-8351397
E-mail: shaktiengr@vsnl.com, Website: www.shaktiengrs.com

DIMENSIONS OF FOOT MOUNTED DESIGNED B3



FRAME		Aprov. Wt. in Kg		Overall Dimensions tol. ± 1.0							Shaft Dimensions					Fixing Dimensions Tol. ± 0.5							
		E	F	K	G	G1	P	P1	D (k6)	T	U	L	L1	A	B	S	C	J	H				
SG0	63	100	125	340	127	105	153	205	19	21.5	6	40	30	80	100	10	15	71	100				
	71			350	140			210															
SG1	63	140	150	360	127	134	179	215	24	27	8	50	40	115	120	10	12	62	112				
	71			370	140			222															
SG2	80			385	175			239															
	63			405	127			228															
SG2	71	175	185	410	140	150	200	235	28	31	8	60	50	140	145	12	14	73	125				
	80			430	175			232															
SG2	90S			475	182			252															
	80			448	175			232															
SG3	90	195	230	493	182	180	255	298	38	41.3	10	80	70	160	190	14	18	95	165				
	100			507	222			325															
SG3	112			530	222			325															
	90			596	182			341															
SG4	100			612	222			371															
	112	270	300	634	222	230	325	371	48	52.3	14	110	100	200	225	22	25	118	210				
SG4	132			728	270			399															
	160			735	328			424															
SG4	190			645	222			416															
	112	370	395	667	222	300	405	416	60	64.4	18	140	130	300	320	24	28	140	255				
SG5	132			756	270			440															
	160			767	328			459															
SG5	190			758	270			440															
	132	370	395	767	328	300	405	459	78	83	22	160	150	300	320	24	28	140	255				
SG6	160			787	328			469															
	190																						

Shakti ENGINEERS
8F, New Empire Ind. Estate (A)
J.B. Nagar Kondivita Lane
Andheri (East) Mumbai-400 059
E-mail : shaktiengr@vsnl.com
Web : www.shaktiengr.com
Tel. : 022-2821 9870
Fax : 022-2835 1397

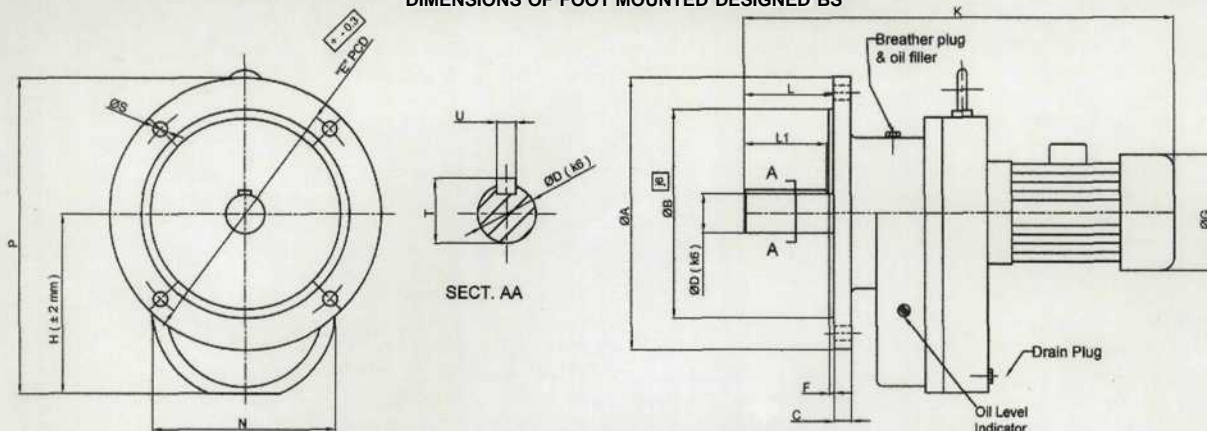
DIMENSIONS OF FOOT MOUNTED
DESIGNED B3

PREPAID BY - PRM
APPROVED BY - GSG

REF, DRG. NO. - 06 / 10 / 066

All Dimensions are in mm. Subject to change without notice as cont. development is going on

DIMENSIONS OF FOOT MOUNTED DESIGNED B5



FRAME		Aprov. Wt. in Kg		Overall Dimensions tol. ± 1.0						Shaft Dimensions					Fixing Dimensions Tol. ± 0.5					
GEAR	MOTOR			G	K	P	N	D (k6)	T	U	L	L1	A	B	F	C	E	S	H	
SG0	63			127	330	200	105	19	21.5	6	40	30	130	80	3.5	10	100	10	97	DIMENSIONS OF FLANGE MOUNTED DESIGNED B5
	71			140	340	207														
SG1	63			127	365	208	134	24	27	8	50	40	160	110	3.5	10	130	10	105	PREPAID BY - PRM APPROVED BY - GSG REF, DRG. NO. - 06 / 10 / 065
	71			140	375	215														
SG2	80			175	394	232	150	28	31	8	60	50	200	130	3.5	12	165	12	120	
	90			127	396	223														
SG3	71			140	408	230														
	80			175	425	247														
SG4	90S			182	470	252														
	80			175	488	277														
SG5	90			182	512	281	180	38	41.3	10	80	70	250	180	4	16	215	14	150	
	100			222	526	311														
SG6	112			222	548	311														
	90			182	597	336														
	100			222	611	366														
	112			222	633	366	230	48	52.3	14	110	100	300	230	5	20	265	18	205	
	132			328	724	390														
	160			370	735	419														
	190			222	659	411														
	112			222	681	411														
	132			270	772	435	300	60	64.4	18	140	130	350	250	5	20	300	18	250	
	160			328	767	464														
	190			270	772	435														
	132			270	772	435	300	78	83	22	160	150	350	250	5	20	300	18	250	
	160			328	767	464														
	190																			

All Dimensions are in mm. Subject to change without notice as cont. development is going on

Shakti ENGINEERS
8F, New Empire Ind. Estate (A)
J.B. Nagar Kondivita Lane
Andheri (East) Mumbai-400 059
E-mail : shaktiengr@vsnl.com
Web : www.shaktiengr.com
Tel. : 022-2821 9870
Fax : 022-2835 1397