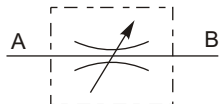


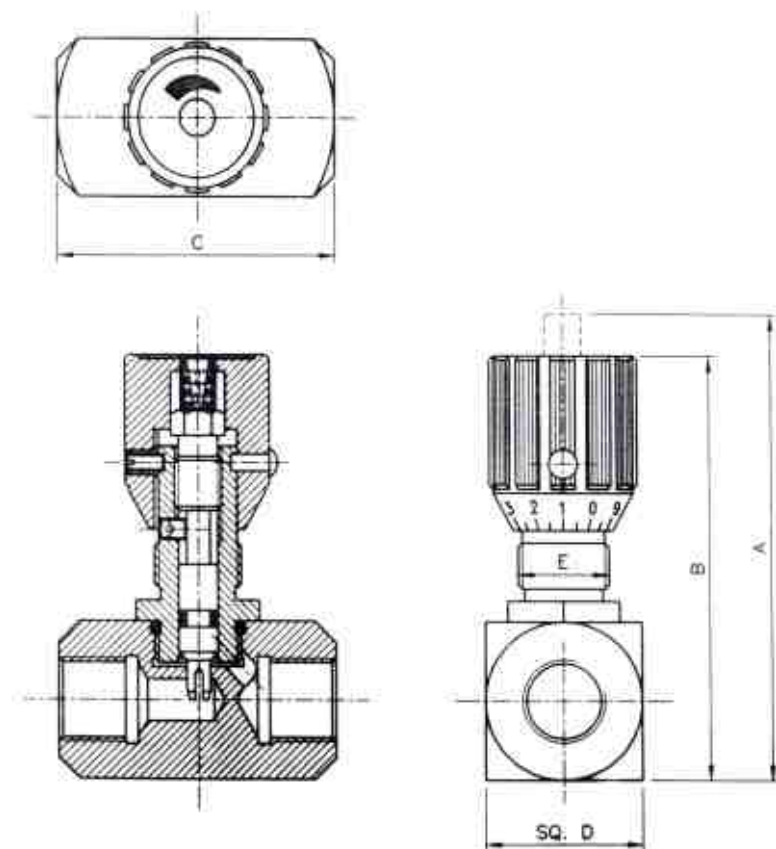
FLUTEC VALVES

"FLUTEC" Flow Control Valves - without Check Valve (Model Code -DV 6 to 40)



Description :

- Flutec Valves are designed to provide simple and accurate control of hydraulic fluids.
- By increasing number of turning of the control knob, starting from the closed position the flow increases evenly.
- The last turning results in a complete opening of the flow passage.
- The coloured scale and coloured ring in the top of the control knob permits an accurate repetition of settings and visual indication of the flow area.
- Increase in the size of the coloured triangle on the rings corresponds to an increase in flow area.
- A setscrew is provided in the side of the knob to lock the flow control valve in set position to comply with safety standards.



MODEL CODE	A	B	C	SQ.D	E
DV 1/4"BSP	89	82	48	30	M18 X 1.5
DV 3/8"BSP	91	84	58	32	M18 X 1.5
DV 1/2" BSP	113	103	68	38	M22 X 1.5
DV 3/4" BSP	135	125	78	50	M22 X 1.5
DV 1" BSP	170	153	100	50	M38 X 1.5
DV 1-1/4"BSP	180	163	108	60	M38 X 1.5
DV 1-1/2"BSP	190	173	108	70	M38 X 1.5

FLUTEC VALVES

102, Alankar Indl. Estate, Near Virwani Indl. Estate,
Vishweshwar Nagar, Aarey Cross Road.
Goregaon (east) Mumbai - 400 063.
Cell.: 9821043687 tele fax: 29271591
email : flutec1@hotmail.com, sales@flutecvalves.com

Website: www.flutecvalves.com