

# Decotherm A / S

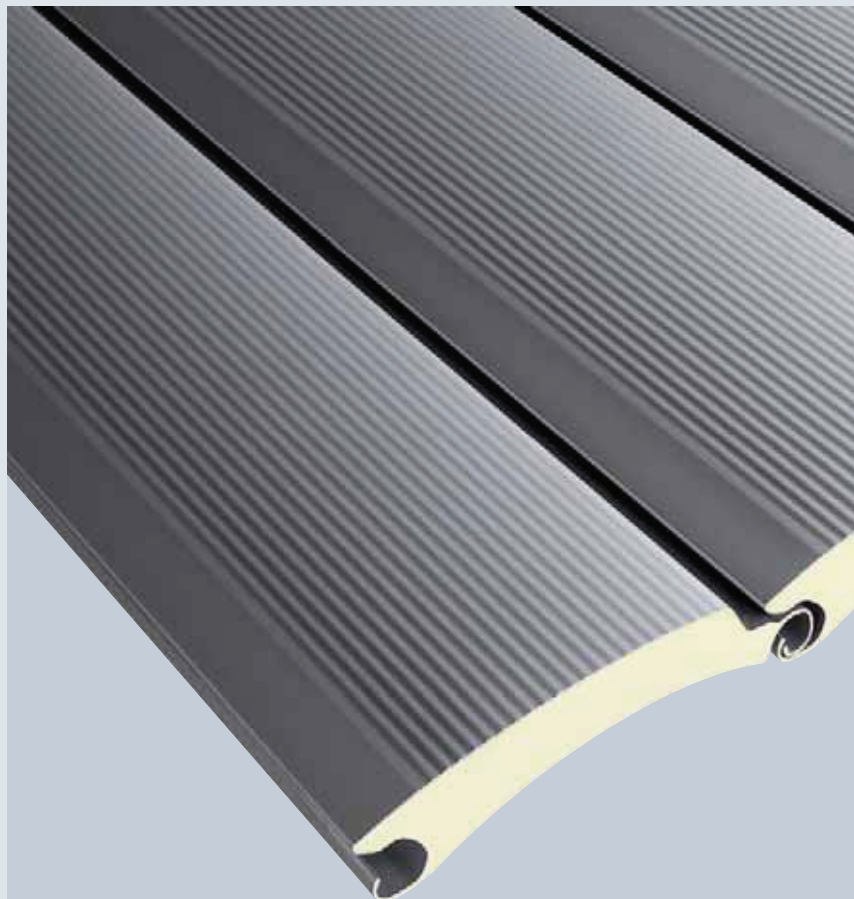
The original in aluminium and in “full hard” steel

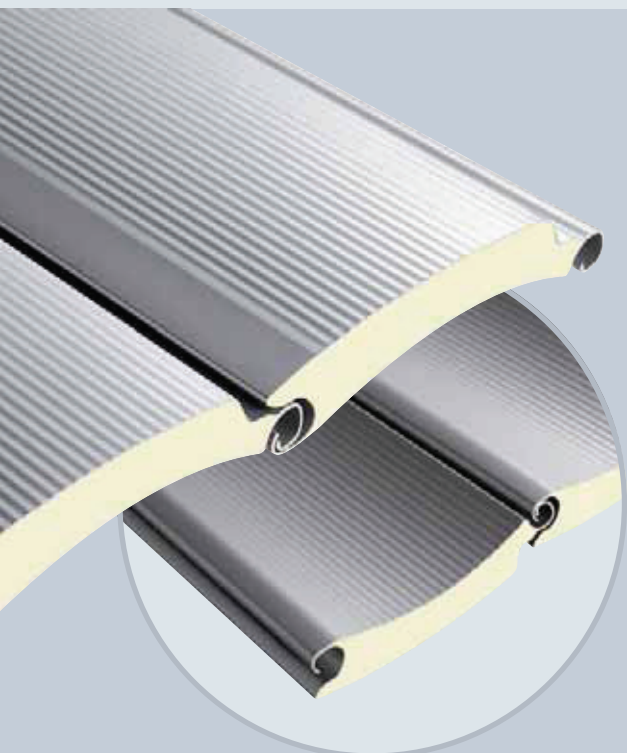


## Innovative profile technology

Hörmann has decisively improved its rolling shutters with the Decotherm profile. A combination of a thoroughly optimised profile geometry with special aluminium and steel alloys shows what is possible today in rolling shutter construction.

The concave interior and exterior surfaces of the Decotherm profiles ensure extremely good roll-up action. Optimally designed hinges reduce heat loss and enable a connection between the curtain and barrel, without the usual pressure and wear marks.





#### Facetted inner profile face

Identical to the micro-profiled outer face.  
Only Hörmann offers this attractive design.



Rectangular

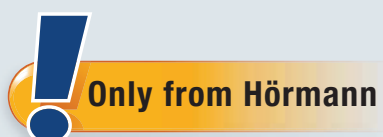


Logistics arrangement

#### Window elements

The double-skinned window elements consist of transparent, impact-resistant polycarbonate with high-quality cover frames in White aluminium (similar to RAL 9006).

The benefit of these frames: the PU foam is no longer visible, noise and abrasion are reduced.





# Decotherm A / S

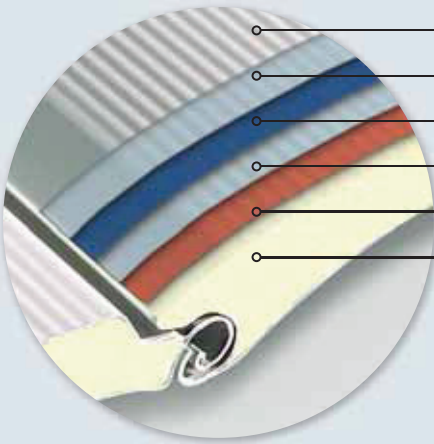
## Innovative profile technology in two material variants



**Surface protection with a system for a consistently satisfying appearance**

All Decotherm profiles are coated with protective paint, which makes them resistant to adverse weather effects.

Polyamide particles embedded in the colour coating improve the sliding characteristics of the profiles and thus effectively reduce abrasion and noise.



- Protective paint or colour coating
- Special galvanizing (Decotherm S)
- Profile material
- Special galvanizing (Decotherm S)
- Bonding agent
- Polyurethane

	Decotherm A	Decotherm S
Protective paint or colour coating	•	•
Special galvanizing		•
Profile material	Aluminium	“Full hard” steel
Special galvanizing		•
Bonding agent	•	•
Polyurethane	•	•



For more information on the preferred colours and standard colours, see page 28.



### Decotherm A

The intelligent lightweight profile made of aluminium, rolls up especially quietly and with minimum abrasion, either with a bright-rolled surface or colour coating, recommended for doors up to 4 × 4 m.

### Decotherm S

Special “full hard” steel makes these profiles especially resistant to damage caused by transport, fitting and operation. Either with or without colour coating. Available for door sizes up to 10 × 9 m.

Profile type	Decotherm A	Decotherm S
<b>Material</b>	Aluminium	Steel
<b>Surfaces without colour coating</b>	Bright-rolled with transparent protective paint	Galvanized with transparent protective paint
<b>Surfaces with colour coating</b>	Exterior and interior with identical colour coating to choose	Exterior and interior with identical colour coating to choose
<b>Standard colours</b>	RAL 9002 RAL 9006	RAL 9002 RAL 9006
<b>Preferred colours</b>	–	•
<b>Special colours</b>	–	•
<b>Profile height</b>	109 mm	109 mm
<b>Curtain weight</b>	Approx. 4.2 kg/m <sup>2</sup>	Approx. 10 kg/m <sup>2</sup>
<b>Wind load class 2 up to a door width of*</b>	4000 mm	10000 mm
<b>Heat transmission EN 12428 (single profiles)</b>	4.6 W/(m <sup>2</sup> K)	3.9 W/(m <sup>2</sup> K)
<b>Door type</b>	SB rolling shutter Basic rolling shutter Classic rolling shutter	SB rolling shutter Basic rolling shutter Classic rolling shutter
<b>Windows</b>	•	•

\* = Optional wind locks required in some cases

• = Optionally available

– = Not available