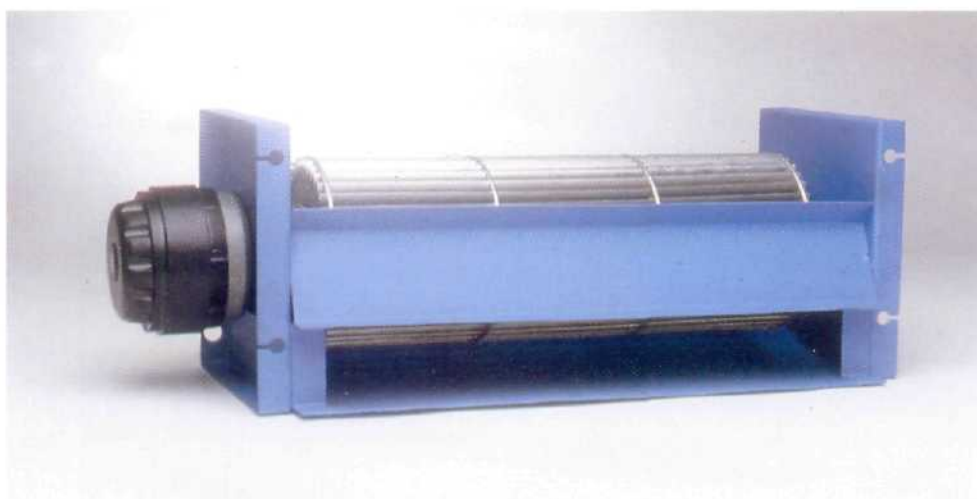
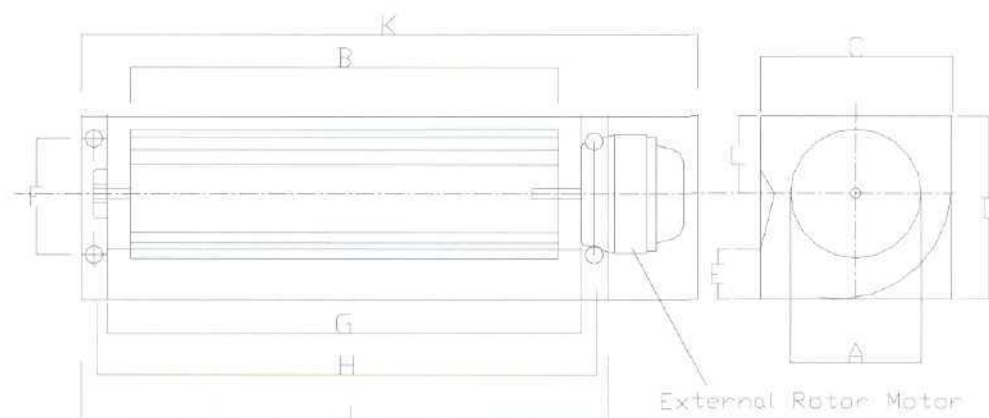


CROSS FLOW FAN



These Fans use impellers where the diameter is less compared to its length. Air outlet is at a low velocity ensuring low noise level. Impeller is made of Aluminium, Galvanized Steel or Engineering Plastics, and coupled with External Rotor Motor with Extended Shaft. The assembly is duly Balanced in two planes to ensure vibration free running.



DIMENSIONS

MODEL	A mm	B mm	C mm	D mm	E mm	F mm	G mm	H mm	J mm	K mm	L mm
CFF23/10028/H	100	325	144	134	38	90	364	385	405	479	65
CFF23/12514/H	125	330	170	170	50	110	380	400	420	500	80

MOTORS USED IN THESE FANS ARE  MARKED



VBM ENTERPRISES

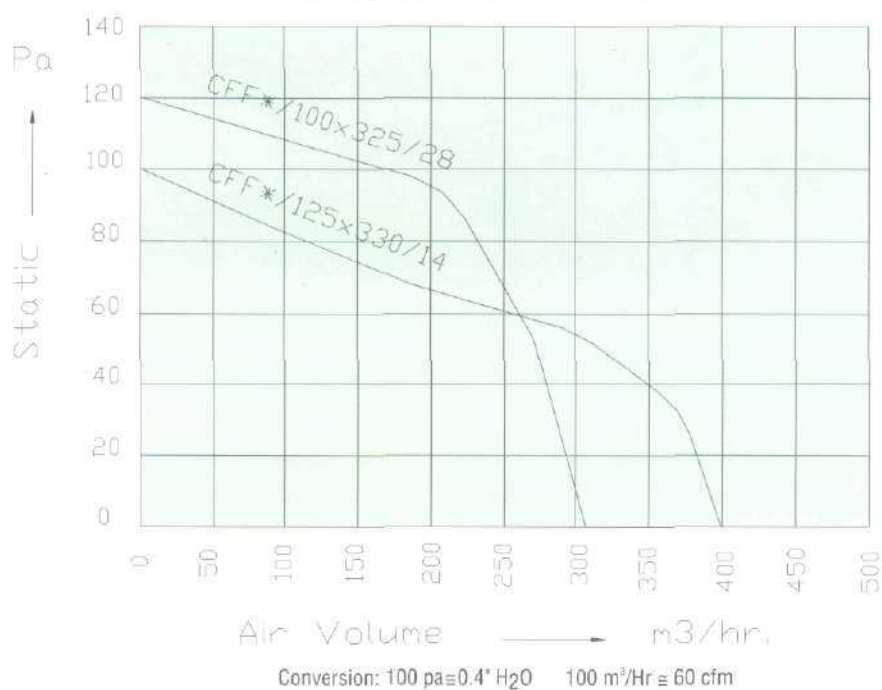
H-14, Ansa Industrial Estate, Saki Vihar Road, Saki Naka, Mumbai - 400 072. INDIA.
E-mail : vbmfans@bom3.vsnl.net.in / info@vbmfans.com
Web: vbmfans.com Ph. No.28471157

Fax No.: 23471683

CROSS FLOW FAN



Air Flow Curves for
Cross Flow Fans



Specifications (50 Hz)

MODEL	ROTOR DIAM MM	IMPELLER DIMENSIONS MM	VOLTAGE V	AMPS A	WATTS W	AIR VOLUME M3/HR
CFF23/100X325/28/H	92	100X325	230	0.23	65	300
CFF23/125X330/14/H	92	125X330	230	0.23	60	400

(60 Hz on request)