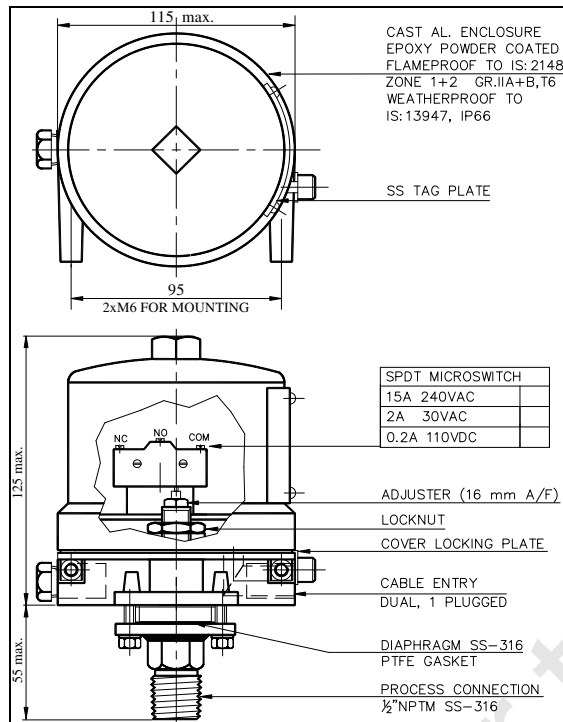


DAG Pressure switches are **diaphragm** operated, fixed differential type. Diaphragm movement is transferred to an **SPDT** switch, which gives **(NO-NC-COM)** change-over contacts. A counteracting **spring** is used to achieve the required settable range. Set point adjustment can be done internally using a spanner. Turning in the adjuster (from right to left) increases the pressure setting & vice-versa. **Calibration** has to be done against a Pressure gauge. *(We do not provide an **indicating scale** due to its high **inaccuracy**, aging effect & believe that safety settings should be set against a test gauge only).*

The standard switch has an SS-316 Diaphragm, SS-316 wetted parts, SPDT Microswitch, IP66 Cast Aluminium Enclosure, Flameproof to Zone 1+2, Gr.IIA+IIB, T6, 1/4"NPTF Process Connection & 3/4"ETF single cable entry.



Model decoding

FLP/	: Flameproof & Weatherproof Enclosure
A-2	: Ranges upto 6 kg/cm ²
A-2H	: Ranges upto 25 kg/cm ²
A-2HP	: Ranges upto 40 kg/cm ²
A-2VHP	: Ranges beyond 40 kg/cm ²
A-3	: Ranges upto 6000 mmWC
A-4	: Ranges upto 400 mmWC
C	: ± Compound Range
V	: Vacuum
D	: Differential
F	: Flanged Process Connection
T	: PTFE Wetted Parts / Diaphragm only (-T)
-DS	: Diaphragm Sealed
-H	: Higher Pressure Protection
-S	: Special Wetted Parts / Diaph./ Construction
-LM	: Limit Switch, Direct / Lever Operated
-P	: Pneumatic output (Block & Bleed)
Example	: FLP/A-2CF-H-DS
	: Flameproof & Weatherproof Enclosure
	: ±Range, Flanged Conn., Diaphragm Sealed
	: Higher Pressure Protection (> 150% FSR)

Specifications

Enclosure	: Cast Aluminium, Epoxy Powder Coated (SS/MS optional) Flameproof to IS:2148, Zone 1&2, Gas Gr. IIA & IIB or IIC, Temperature Class T6 Weatherproof to IS:13947, IP66, 67
Certifications	: CMRI, BIS, CCE, ERTL
Mounting	: Direct / Wall / 2"Yoke
Adjustment	: Internal, Tamperproof with locknut
Element	: Formed Diaphragm / Piston
Material	: SS-316 / PTFE / Monel / Hastalloy 'C' / Tantalum (Others on Request)
Switch	: SPDT / 2 SPDT, Snap Acting Micro, Potential Free contacts
Rating	: Upto 5A, 15A 250VAC / 5A 24VDC / 0.5A 110VDC
Contact	: Silver / Gold Plated / Hermetically Sealed
Differential	: Fixed minimum < 5% FSR, < 8% FSR for 2SPDT & < 16% FSR for Hermetically Sealed
Accuracy	: ± 1% FSR, ± 2% FSR (±0.5% FSR on Request)
Repeatability	: ± 1% FSR, ± 2% FSR (±0.5% FSR on Request)
Overrange	: 150% of FSR (Higher or Full Vacuum optional)
Temperature	: -40° to +100°C, -40° to +200°C, For higher mount remote
Process Conn.	: 1/4"NPTF, 1/2"NPTM/F/BSPM, Flanged, Extended Diaphragm, Flush Diaphragm Diaphragm Sealed, Triclover Direct welded for Food Grade, (Size as per request)
Material	: SS-316 / Monel / CS / PTFE / PP, (Others on Request)
Cable Entry	: 3/4"ETF, 1/2"NPTF (Others through adapter)
O₂ Service	: Duly De-Greased Wetted Parts

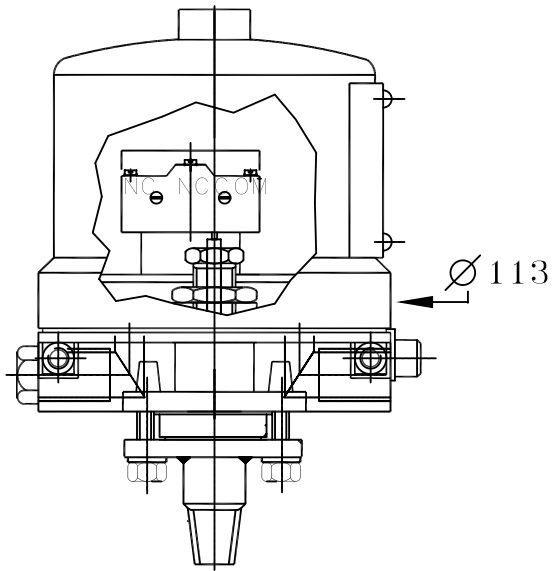
Dag Process Instruments Pvt. Ltd.

C4 Nandanvan Industrial Estate, Opp. ACC Research Centre, LBS Marg, Thane 400604

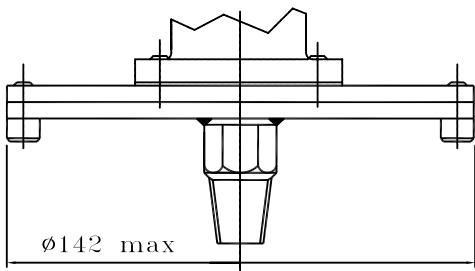
Phone: 25812695, 25812710 Fax: + 91-22-25832311 Email: dagprocess@vsnl.com

Manufacturers of Pressure, Level, Flow, Temperature Switches

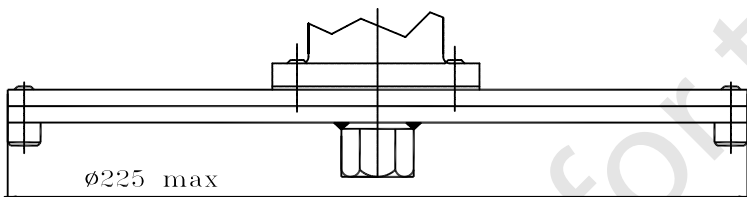
Visit our site : www.dagprocess.com



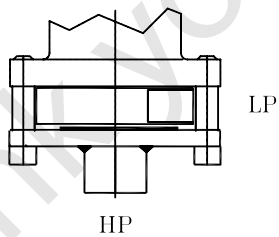
PROCESS CONNECTION A2



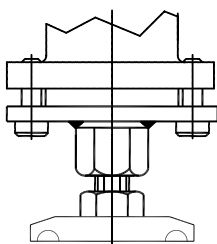
PROCESS CONNECTION A3/A4



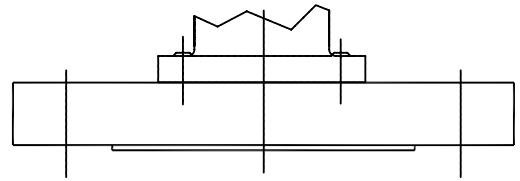
PROCESS CONNECTION A4



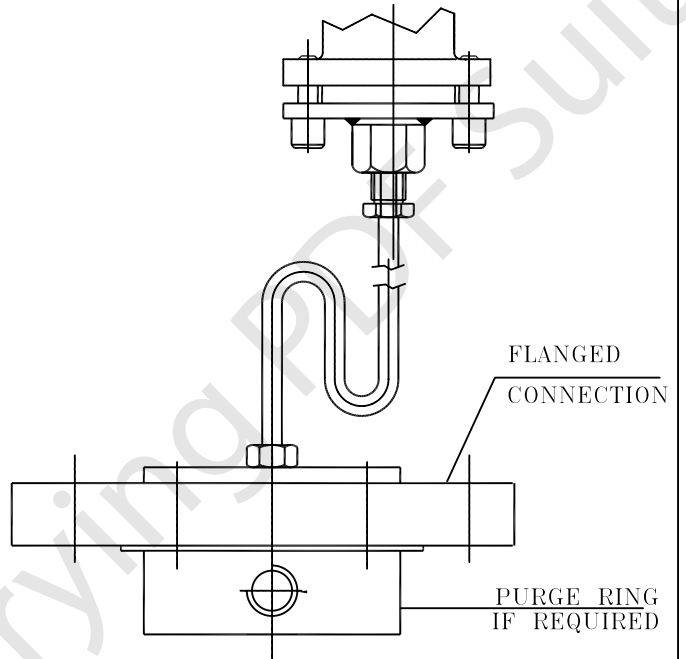
PROCESS CONNECTION D



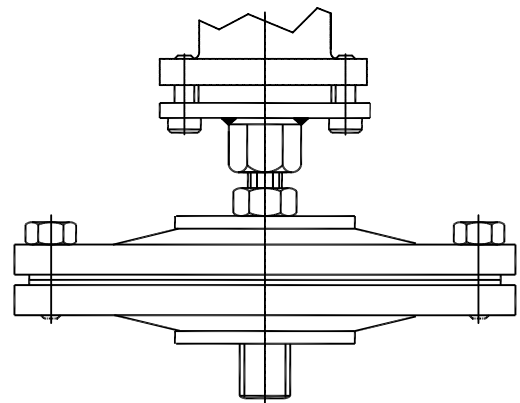
FOOD GRADE TRICLOVER
BIO/PHARMA CONNECTION DS



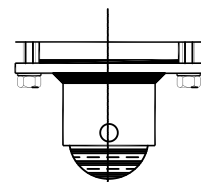
PROCESS CONNECTION F
FLANGED



PROCESS CONNECTION DS
REMOTE DIAPHRAGM SEAL



PROCESS CONNECTION DS
DIRECT DIAPHRAGM SEAL



LIMIT SWITCH LM